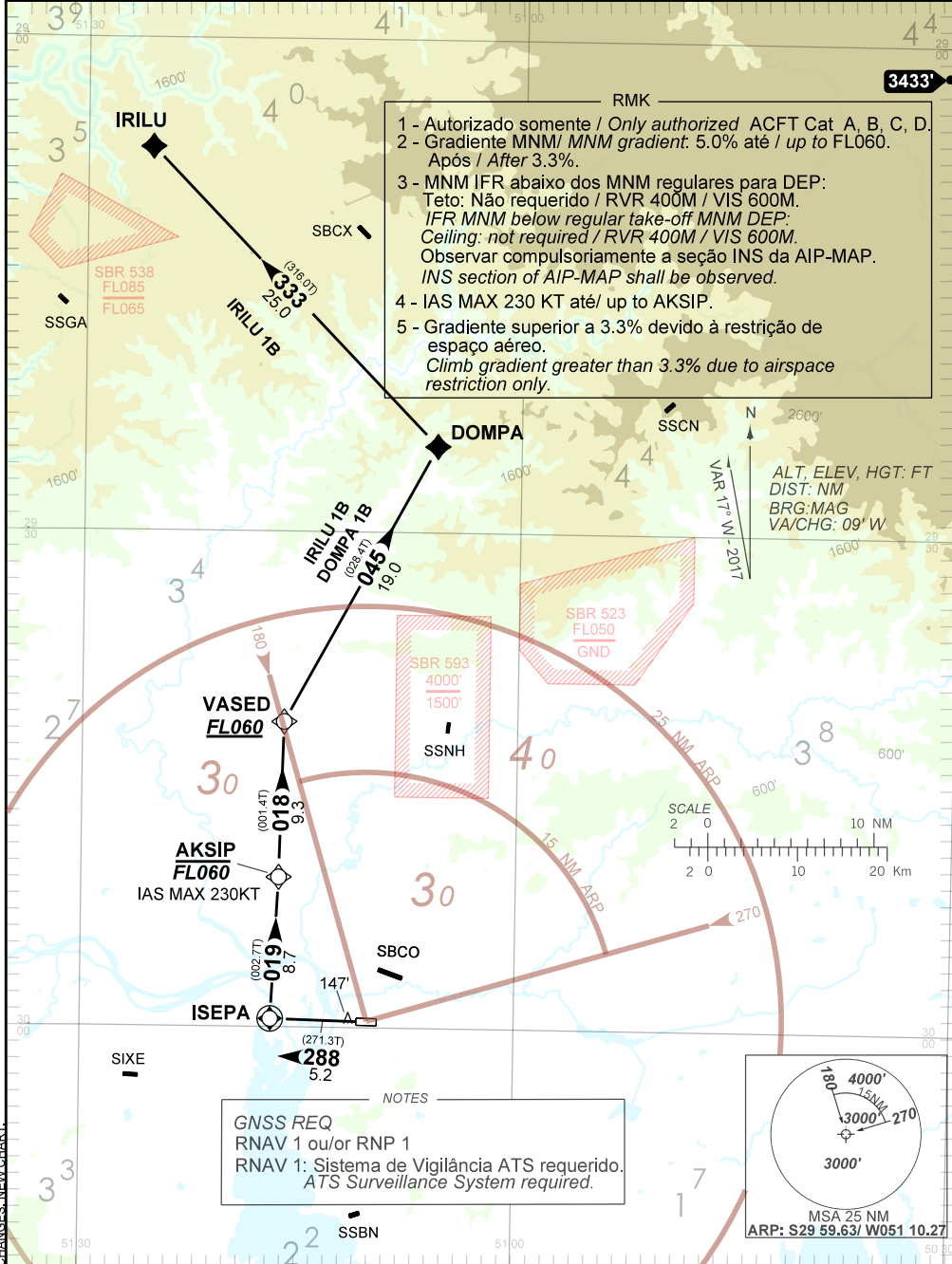


AD ELEV: 12'

RNAV DOMPA 1B - IRILU 1B

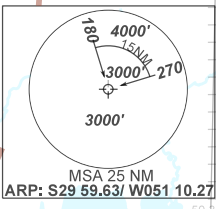
TA 4000'	TWR PORTO ALEGRE 118.10 121.50	APP PORTO ALEGRE 119.00 120.10 120.55 128.90 121.50	AFIS CAXIAS 131.60
----------	-----------------------------------	--	-----------------------



- RMK
- 1 - Autorizado somente / Only authorized ACFT Cat A, B, C, D.
  - 2 - Gradiente MNM/ MNM gradient: 5.0% até / up to FL060. Após / After 3.3%.
  - 3 - MNM IFR abaixo dos MNM regulares para DEP: Teto: Não requerido / RVR 400M / VIS 600M. IFR MNM below regular take-off MNM DEP: Ceiling: not required / RVR 400M / VIS 600M. Observar compulsoriamente a seção INS da AIP-MAP. INS section of AIP-MAP shall be observed.
  - 4 - IAS MAX 230 KT até / up to AKSIP.
  - 5 - Gradiente superior a 3.3% devido à restrição de espaço aéreo. Climb gradient greater than 3.3% due to airspace restriction only.

NOTES

GNSS REQ  
RNAV 1 ou/or RNP 1  
RNAV 1: Sistema de Vigilância ATS requerido.  
ATS Surveillance System required.



CHANGES: NEW CHART

**INTENCIONALMENTE EM BRANCO**  
INTENTIONALLY LEFT BLANK