

**INSTRUMENT APPROACH
CHART (IAC)**

PRESIDENTE PRUDENTE / Presidente Prudente (SBDN)

RNAV(GNSS) RWY 12

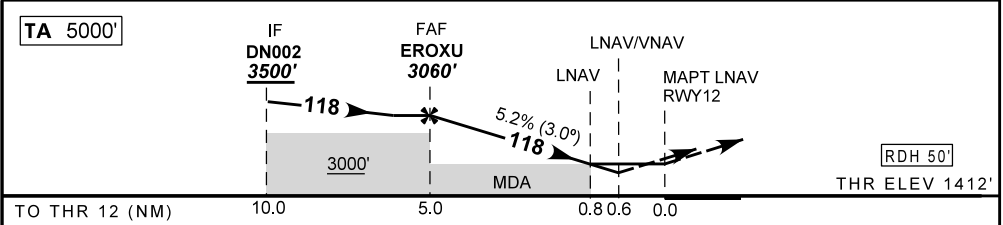
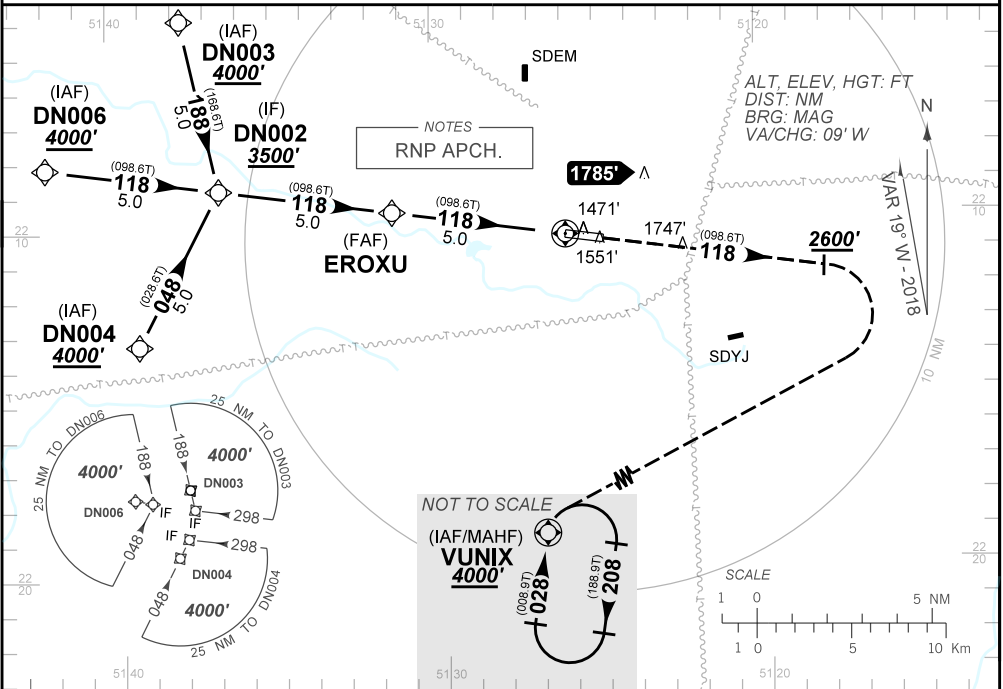
AD ELEV: 1483'

ATIS NIL	APP PRUDENTE 125.45		TWR PRUDENTE 118.45		AFIS PRUDENTE 125.45
N/A	FINAL CRS 118°	FAF 3060'	LNAV/VNAV DA / (OCH): 1674' / (262')		LNAV MDA / (OCH): 1730' (320')

APCH Perdida: Subir para **4000'**. Após **2600'**, curvar à DIREITA direto VUNIX para espera.

Missed APCH: Climb to **4000'**. After **2600'**, turn RIGHT direct to VUNIX for holding.

RMK: 1) Sistemas não compensados Baro-VNAV, LNAV/VNAV NÃO AUTORIZADO abaixo de 0°C ou acima de 48°C.
1) For uncompensated systems Baro-VNAV, LNAV/VNAV NOT AUTHORIZED below 0°C or above 48°C.



EROXU	4.0	3.0	2.0	0.8	RWY12	KT	090	110	130	150	170	190
3060	2735	2417	2098	1730	ALT	FPM	500	600	700	800	900	N/A
1648	1323	1005	686	320	(HGT)	FAF-MAPT	NA					

STRAIGHT-IN	CAT	A	B	C	D	E
LNAV/VNAV	DA / (OCH)	1674' / (262')				
	ALS/NO ALS/ RVR ALS (m)	NIL / 1600 / NIL				
LNAV	MDA / (OCH)	1730' / (320')				
	ALS/NO ALS/ RVR ALS (m)	NIL / 1600 / NIL				
CIRCLING	MDA / (OCH)	NA				
	VIS (m)					

CHANGES: PROC. LAYOUT, MNM OPR. DEC. RMK.

INTENCIONALMENTE EM BRANCO
INTENTIONALLY LEFT BLANK