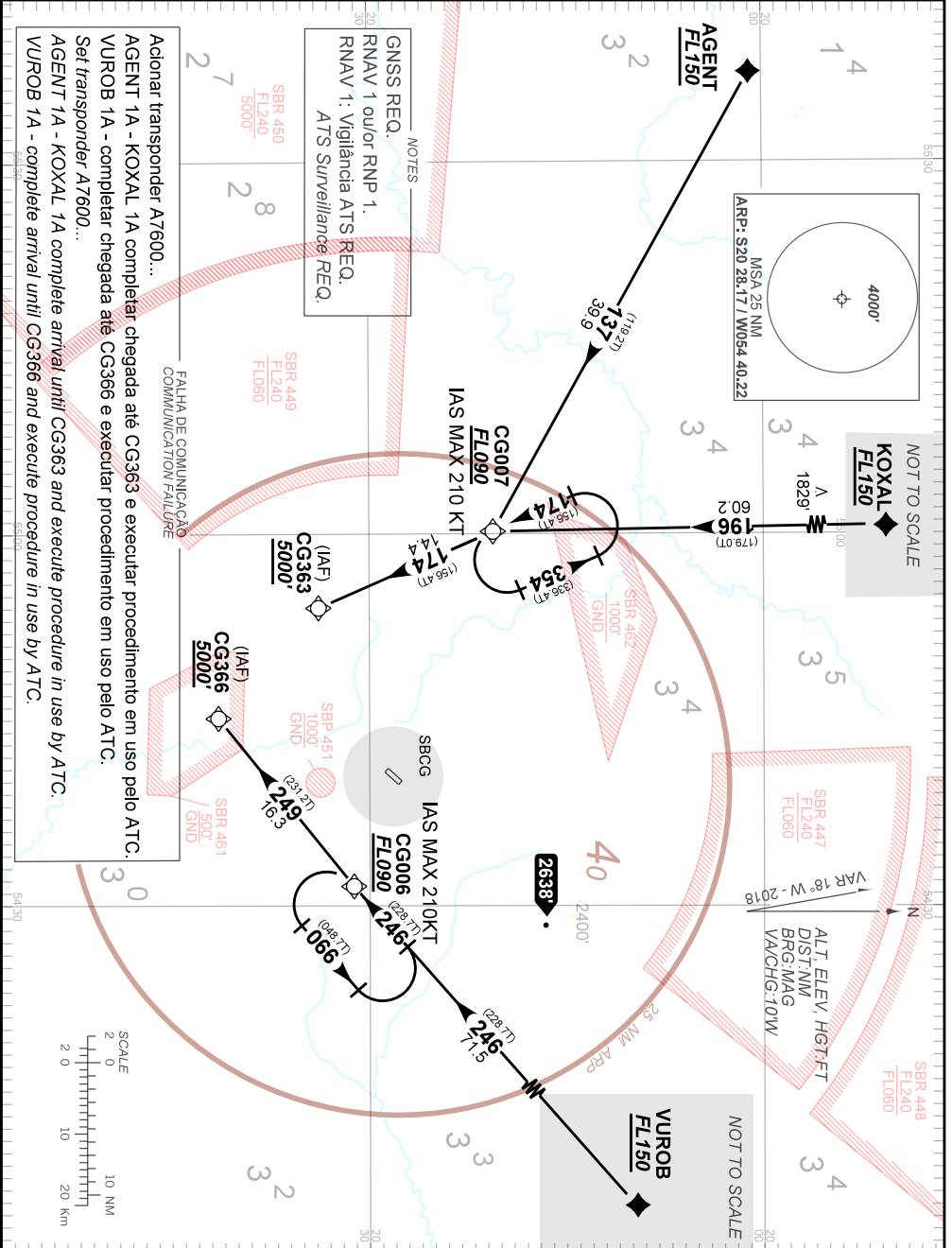


AD ELEV: 1834'

RNAV AGENT 1A - KOXAL 1A - VUROB 1A

TA 5000'	D-ATIS 127.60	ACC CURITIBA 128.15 124.85 129.25 123.70 121.50	APP CAMPO GRANDE 119.35 119.65 120.20 121.00 121.50	TWR CAMPO GRANDE 118.10 121.50
----------	------------------	---	---	-----------------------------------



Acionar transponder A7600...
AGENT 1A - KOXAL 1A completar chegada até CG363 e executar procedimento em uso pelo ATC.
VUROB 1A - completar chegada até CG366 e executar procedimento em uso pelo ATC.
Set transponder A7600...
AGENT 1A - KOXAL 1A complete arrival until CG363 and execute procedure in use by ATC.
VUROB 1A - complete arrival until CG366 and execute procedure in use by ATC.

NOTES
GNSs REQ.
RNAV 1 ou/ou RNP 1.
RNAV 1: Vigilancia ATIS REQ.
ATS Surveillance REQ.

FALHA DE COMUNICAÇÃO
COMMUNICATION FAILURE



CHANGES: DEC. IDENT. PROC. RMK LAYOUT.

INTENCIONALMENTE EM BRANCO
INTENTIONALLY LEFT BLANK