

INSTRUMENT APPROACH  
CHART (IAC)

MANAUS / Ponta Pelada, MIL (SBMN)

ILS Y RWY 09

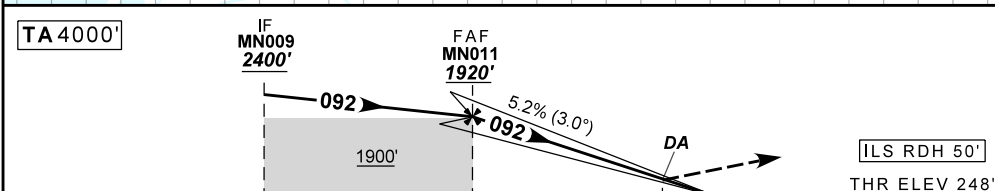
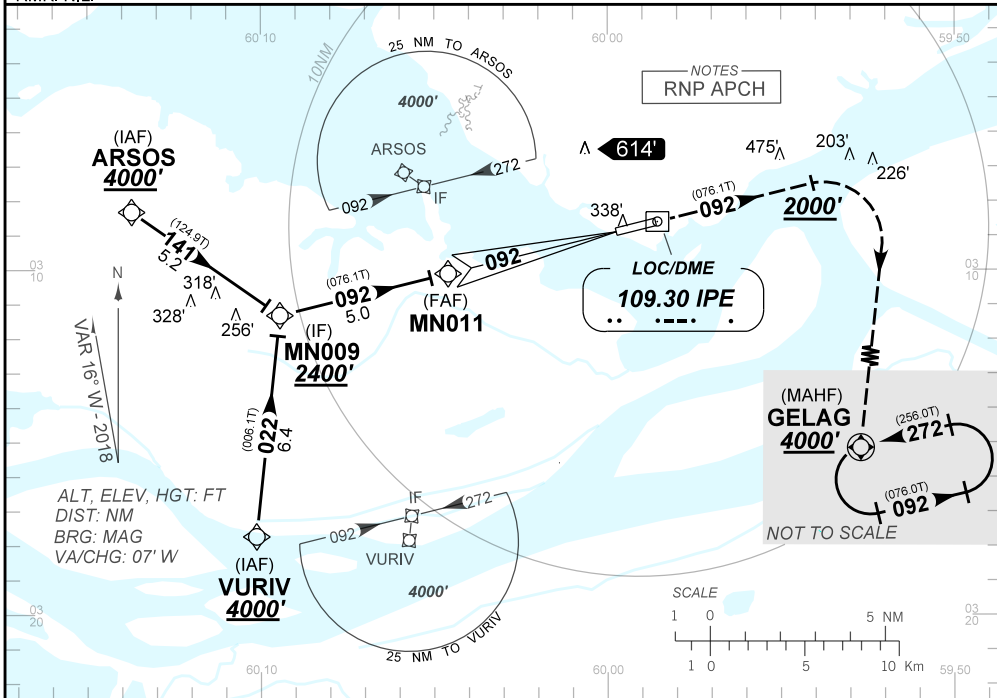
AD ELEV: 259'

ATIS NIL	APP MANAUS 119.25 119.70 120.40 121.50	TWR MANAUS 118.10	GNDC MANAUS NIL
LOC IPE 109.30 MHz	FINAL CRS 092°	FAF 1920'	CAT I DA / (OCH): 448' (200')
			N/A

APCH Perdida: 1) Subir para **4000'** com gradiente MNM 4%. Manter rumo **092** até cruzar **2000'**. Então, curvar à DIREITA direto GELAG para espera. 2) IAS MAX 250KT.

Missed APCH: Climb to **4000'** with gradient MNM 4%. Maintain course **092** until passing **2000'**. Then, turn RIGHT direct to GELAG for holding. 2) IAS MAX 250KT.

RMK: NIL.



TO THR 09 (NM)	10.0	5.0	0.0
TO IPE (DME)	11.2	6.2	1.2

NIL	RWY09	KT	NIL
NIL	ALT	FPM	NIL
NIL	(HGT)	FAF-MAPT	NIL

STRAIGHT-IN	CAT	A	B	C	D	E
CAT I	DA / (OCH)	448' / (200')				517' / (269')
	ALS/NO ALS/ RVR ALS (m)	NIL / 1200 / NIL				NIL / 1300 / NIL
CIRCLING	MDA / (OCH)	NA				
	VIS (m)					

CHANGES: NEW CHART.

**INTENCIONALMENTE EM BRANCO**  
INTENTIONALLY LEFT BLANK