

**INSTRUMENT APPROACH
CHART (IAC)**

VITÓRIA / Eurico de Aguiar Salles (SBVT)

RNAV(GNSS) Z RWY 02

AD ELEV: 34'

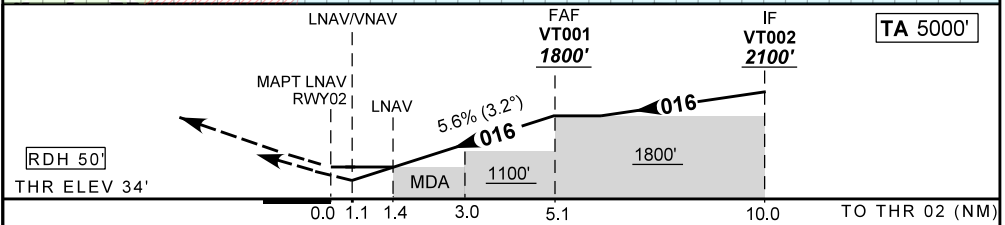
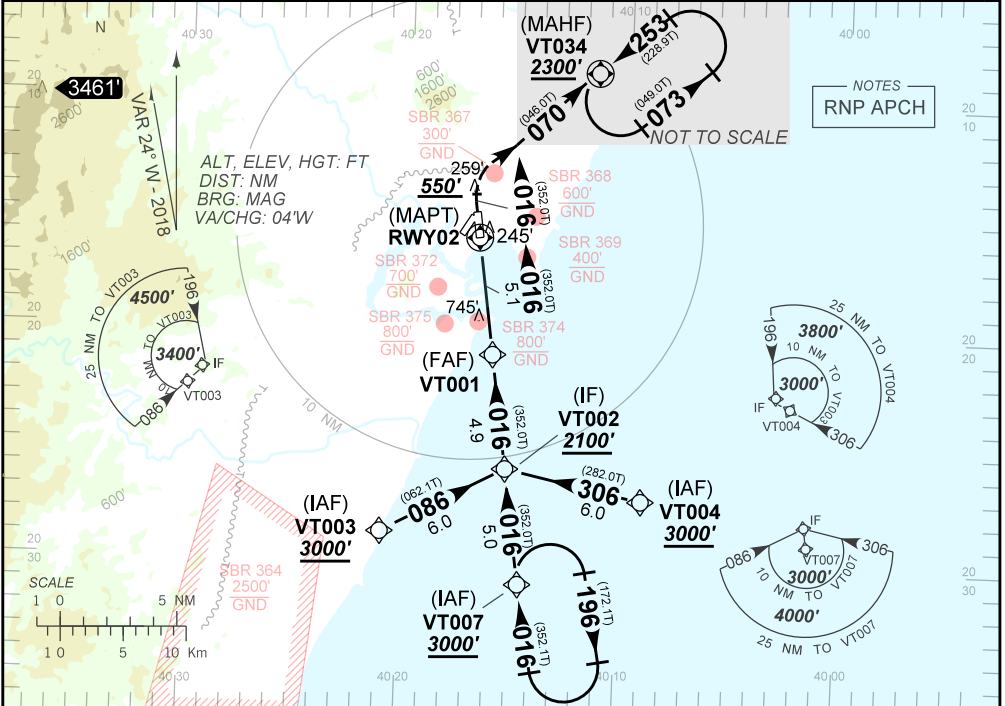
ATIS 125.575	APP VITÓRIA 119.85 121.50	TWR VITÓRIA 118.10 121.50	GNDC 121.95
N/A	FINAL CRS 016°	FAF 1800'	MDA / (OCH): 500' (470')
LNAV/VNAV		LNAV	
DA / (OCH): 406' (380')			

APCH Perdida: Subir para **2300'**. Ao passar **550'**, curvar à DIREITA rumo **070** até VT034 para espera.

Missed APCH: Climb to **2300'**. After **550'**, turn RIGHT course **070** up to VT034 for holding.

RMK: 1) Para sistemas não compensados Baro-VNAV, LNAV/VNAV NAO AUTORIZADO abaixo de 5°C ou acima de 40°C.

1) For uncompensated systems Baro-VNAV, LNAV/VNAV NOT AUTHORIZED below 5°C or above 40°C.



RWY02	1.4	2.0	3.0	4.0	VT001							
ALT	500	759	1100	1439	1800							
(HGT)	470	725	1066	1405	1766							
						KT	090	110	130	150	170	190
						FPM	550	650	800	900	1000	NA
						FAF-MAPT	NA					

STRAIGHT-IN	CAT	A	B	C	D	E
	DA / (OCH)	406' / (380')				NA
LNAV/VNAV	ALS/NO ALS/RVR ALS (m)	NIL / 1700 / NIL				
	MDA / (OCH)	500' / (470')				
LNAV	ALS/NO ALS/RVR ALS (m)	NIL / 1700 / NIL		NIL / 2200 / NIL		
	MDA / (OCH)	600' / (570')	810' / (780')	1560' / (1530')		
CIRCLING	VIS (m)	1600	1600	4800		NA

CHANGES: NEW CHART.

INTENCIONALMENTE EM BRANCO
INTENTIONALLY LEFT BLANK