

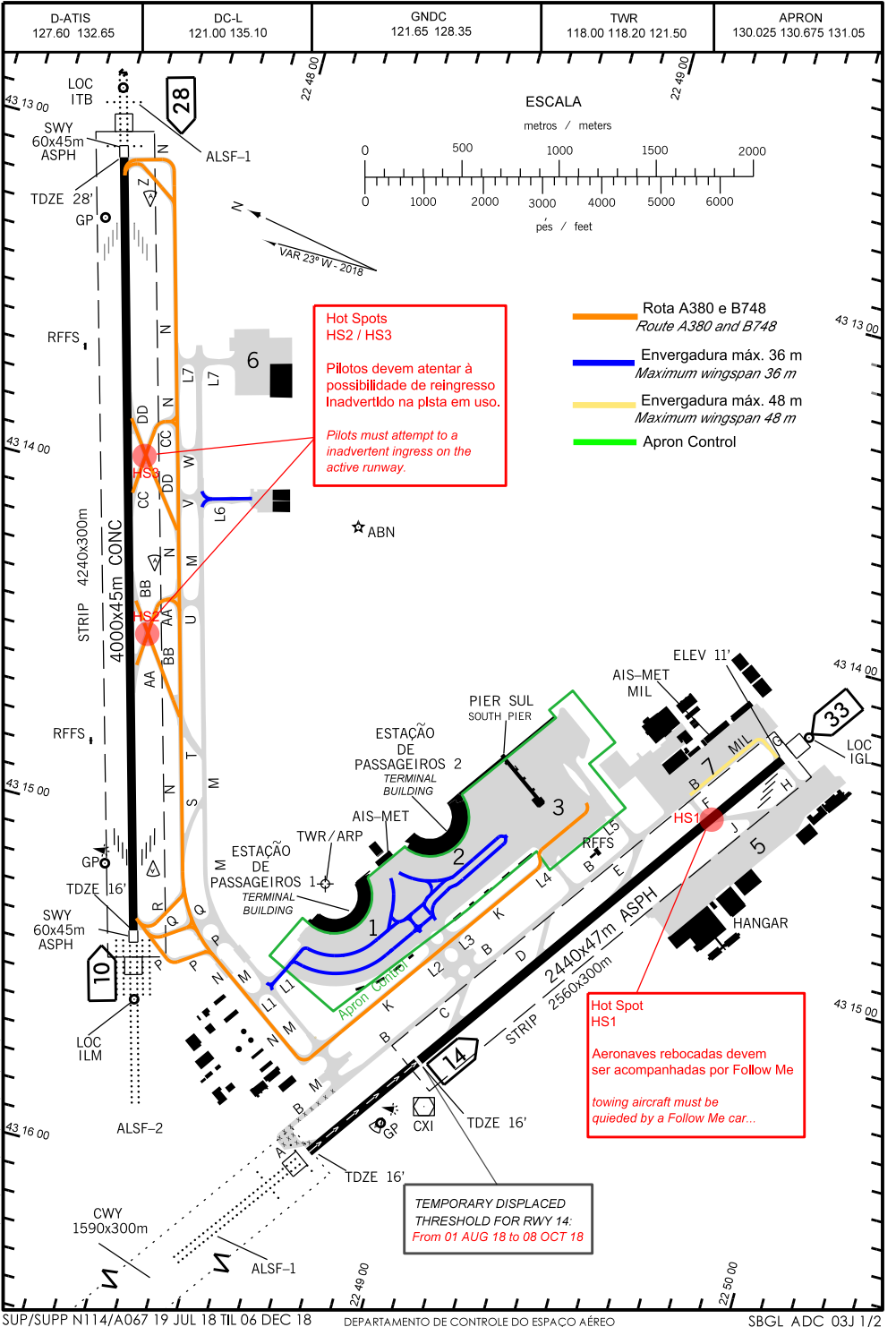
CARTA DE AERÓDROMO (ADC)
AERODROME CHART (ADC)

RIO DE JANEIRO / Galeão - Antônio Carlos Jobim, INTL (SBGL)

RJ-BRASIL

ELEV 28'

ARP S22 48 36 W043 15 02



**Hot Spots
HS2 / HS3**

Pilotos devem atentar à
possibilidade de reingresso
Inadvertido na pista em uso.

Pilots must attempt to a
inadvertent ingress on the
active runway.

- Rota A380 e B748
Route A380 and B748
- Envergadura máx. 36 m
Maximum wingspan 36 m
- Envergadura máx. 48 m
Maximum wingspan 48 m
- Apron Control

**Hot Spot
HS1**

Aeronaves rebocadas devem
ser acompanhadas por Follow Me

towing aircraft must be
quieided by a Follow Me car...

TEMPORARY DISPLACED
THRESHOLD FOR RWY 14:
From 01 AUG 18 to 08 OCT 18

CHANGES: TWY, VAR, GNDC, RMK, TWR, TWY, ELEV, WDI

ADC – SBGL: INFORMAÇÕES COMPLEMENTARES / COMPLEMENTARY INFORMATION

CARACTERÍSTICAS FÍSICAS / PHYSICAL CHARACTERISTICS												
PISTA RUNWAY				DIMENSÕES(m) DIMENSIONS(m)					PCN		TIPO DE SUPERFÍCIE SURFACE KIND	
RWY	BRG	MAG	Tipo Type	RCD	RWY	SWY	CWY	STRIP	RESA	RWY	RWY	SWY
a	b	c	d	e	f	g	h	i	j	k	l	
10	097	PA-2	4	4000X45	60X45			4240 X 300	90X90	78/R/A/W/T	CONC	ASPH
28	277	PA-1	4		60X45			90X90	ASPH			
14	148	PA-1	4	2440X47		1590X300		2560 X 300	90X94	73/F/B/X/T COMP	ASPH	
33	328	NPA	4					90X94				

DISTÂNCIAS DECLARADAS, AUXÍLIOS VISUAIS E COORDENADAS DAS CABECEIRAS
DECLARED DISTANCES, VISUAL AIDS AND THRESHOLD COORDINATES

RWY	TORA(m)	TODA(m)	ASDA(m)	LDA(m)	AUXÍLIOS / AIDS		ALTURA GEOIDAL(m) GEOID HEIGHT(m)	COORDENADAS COORDINATES
10	4000	4000	4060	4000	PAPI	ALSF-2	- 5,37	S22 48 07 W043 15 19
28	4000	4000	4060	4000	PAPI (2.95)	ALSF-1	- 5,39	S22 47 32 W043 13 03
14	2440	2440	2440	2440		ALSF-1	- 5,37	S22 48 59 W043 15 28
33	2440	2440	2440	2440	PAPI		- 5,40	S22 49 45 W043 14 19

SERVIÇO DE SALVAMENTO E CONTRAINCÊNDIO/ RESCUE AND FIRE FIGHTING SERVICE : RFFS REQ-10

RWY 10 / 28

Sinalização horizontal / Marking Aids



Auxílios luminosos / Lighting Aids

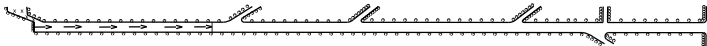


RWY 14 / 33

Sinalização horizontal / Marking Aids



Auxílios luminosos / Lighting Aids



RMK:

- MEHT : PAPI - RWY 10: 72' ; RWY 28: 71' ; RWY 33: 89,77'.
- HIRL : RWY 10 / 28 ; 14 / 33 ; TWY : AA , BB , CC , DD.
- AS ACFT EXECUTANDO OS PROCEDIMENTOS DE DESCIDA (RWY 10) QUE ABANDONAM SANTA CRUZ, NO FL080, DEPENDEM DE PRÉVIA COORDENAÇÃO ENTRE APP RIO E APP SANTA CRUZ, HAVENDO POSSIBILIDADE DE ESPERAS NÃO PREVISTAS.
ACFT ACCOMPLISHING APPROACH PROCEDURES (RWY 10), THAT ARE LEAVING SANTA CRUZ AT FL080 DEPEND ON PREVIOUS COORDINATION BETWEEN RIO-APP, AND MAY RESULT IN NON-SCHEDULED HOLDINGS.
- TWY Y1, Y2, Y3 E Y4 EXCLUSIVAS PARA ACFT COM NO MÁXIMO 36M DE ENVERGADURA.
TWY Y1, Y2, Y3 AND Y4 EXCLUDING FOR ACFT WITH NOT MAXIMUM 36M OF WINGSPAN.
- PÁTIO 01 EXCLUSIVO PARA ACFT COM, NO MÁXIMO, 36M DE ENVERGADURA.
COURT 01 EXCLUSIVE FOR ACFT COM, MAXIMUM, 36M OF WINGSPAN.
- ATENÇÃO: AERONAVES COM ENVERGADURA MAIOR QUE 36M DEVERÃO TER CAUTELA AO EXECUTAR CURVAS MAIORES QUE 90° DURENTE MANOBRA DE TAXI.
WARNING: AIRCRAFT WITH A WINGSPAN GREATER THAN 36M SHOULD HAVE CAUTION WHEN PERFORMING TURNS GREATER THAN 90 DEGREES TAXI MANEUVERING.

CHANGES: TWY - VAR. GNDC; RMK: TWY: TWY ELEV. WPT