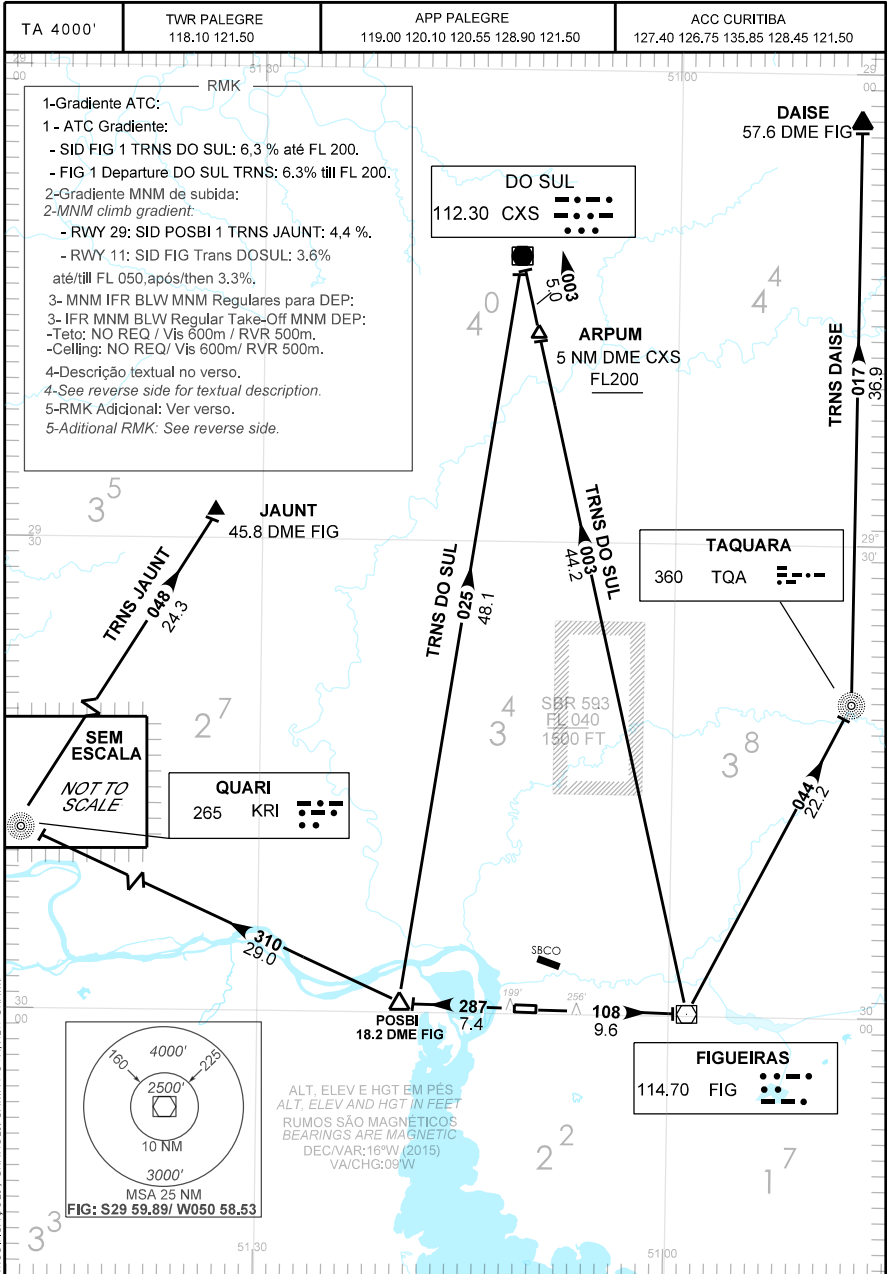


CARTA DE SAÍDA PADRÃO
 POR INSTRUMENTOS (SID)
 STANDARD DEPARTURE CHART
 INSTRUMENT (SID)

PORTO ALEGRE/ SALGADO FILHO, INTL (SBPA)
RWY 11/29
FIG 1 - POSBI 1



RMK

- 6 - Obstáculos próximos violando a OIS desconsiderados na determinação do gradiente de subida :
6 - Close-in obstacles penetrating the OIS surface and not considered in calculation of climb gradient:
- a) DEP RWY 11: Terreno/Terrain: AZM MAG / MAG AZM FM THR 29 (DER): 192 DEG
DIST FM THR 29 (DER): 88 m
ALT: 50 FT
- b) DEP RWY 29: - Construção/Building: AZM MAG / MAG AZM FM THR 11: 250 DEG
DIST FM THR 11: 700m
ALT: 57m
- 7- SID POSBI 1 : Gradiente maior que 3,3%, acima de 200 ft, devido a restrição de espaço aéreo, apenas.
7- SID POSBI 1 : Climb gradient greater than 3.3%, above 200 ft, due airspace restrictions only.
- 8-Observar compulsoriamente seção INS da AIP-MAP
8 - *INS section of AIP-MAP shall be observed.*
- 9- Aeronaves com destino a SBCX: desconsiderar a restrição de nível no fixo ARPUM.
9- Aircraft from SBPA to SBCX: disregard vertical restriction at ARPUM.

DESCRIÇÃO TEXTUAL
TEXTUAL DESCRIPTION

RWY 11

SAÍDA FIG 1 TRNS DOSUL e TRNS DAISE:

Após decolagem, manter RDL 288 FIG até o VOR FIGUEIRAS. Então...

- 1 - TRNS DOSUL:.....curvar à esquerda, RDL 003 FIG até o VOR de DO SUL.
- 2 - TRNS DAISE:.....curvar à esquerda, RDL 044 FIG, OU QDM 044 TQA, até o NDB TAQUARA. Curvar à esquerda, QDR 017 TQA até DAISE.

RWY 29

SAÍDA POSBI 1 TRNS DOSUL e TRNS JAUNT:

Após decolagem, manter RDL 287 FIG, até POSBI. Então...

- 1 - TRNS DOSUL:.....curvar à direita, RDL 205 CXS, até o VOR DO SUL.
- 2 - TRNS JAUNT :.....curvar à direita, QDM 310 KRI até o NDB QUARI. Curvar à direita e manter o QDR 048 KRI até JAUNT.

RWY 11

DEPARTURE FIG 1 TRNS DOSUL and TRNS DAISE

After take-off, maintain 288 RDL FIG, up to FIGUEIRAS VOR. Then...

- 1 - DOSUL TRNS :.....turn left to intercept 003 RDL FIG VOR up to DO SUL VOR.
- 2 - DAISE TRNS :.....turn left to intercept 044 RDL FIG VOR, or 044 Course to TQA NDB up to TAQUARA NDB, then turn left to intercept 017 QDR TQA up to DAISE.

RWY 29

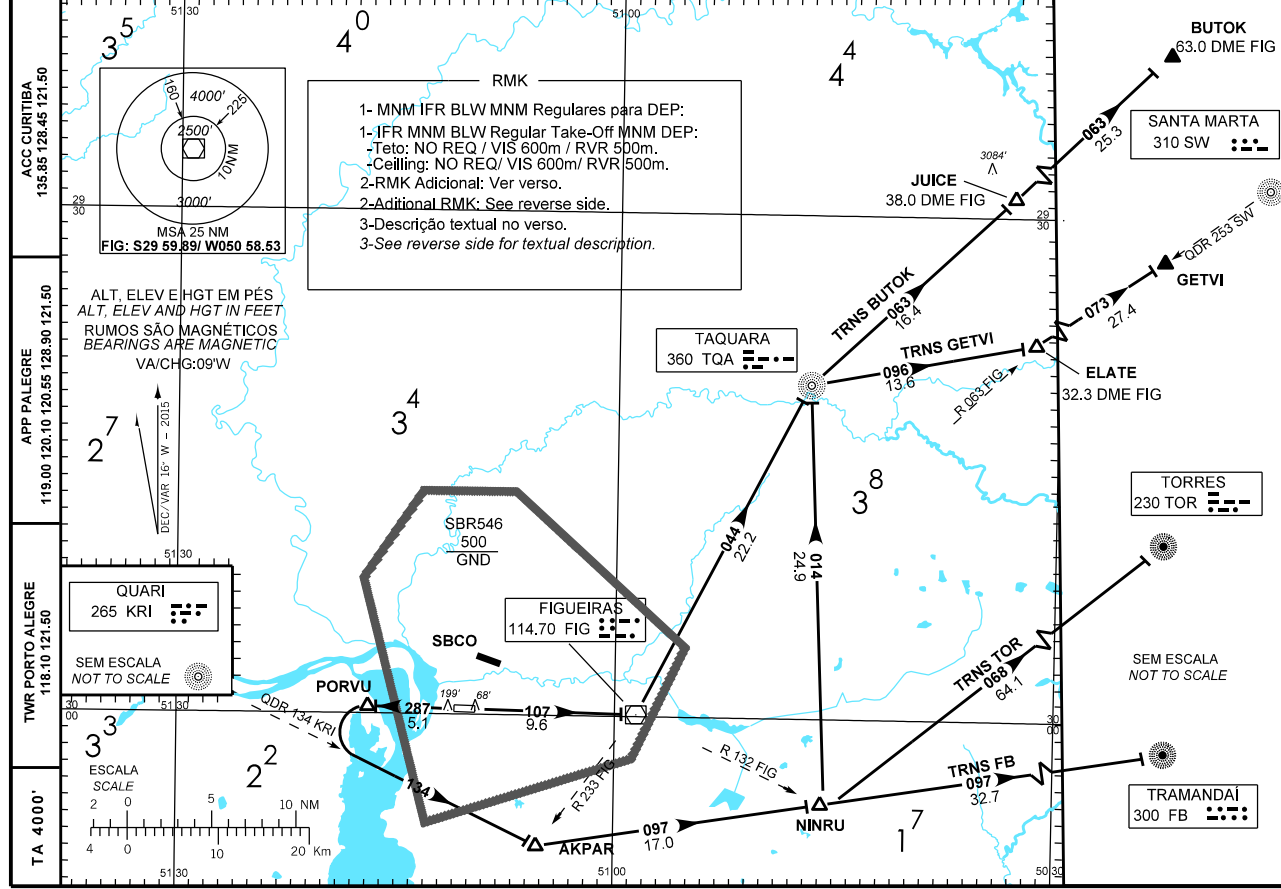
Departures POSBI 1 TRNS JAUNT and TRNS DOSUL:

After take-off, maintain 287 RDL FIG VOR, up to POSBI. Then...

- 1 - DOSUL TRNS :.....turn left to intercept 205 RDL CXS VOR, up to overhead DO SUL VOR.
- 2 - JAUNT TRNS :.....turn left to intercept 310 Course to KRI up to QUARI NDB. Then intercept 048 QDR KRI up to JAUNT.

CARTA DE SAÍDA PADRÃO
 POR INSTRUMENTOS (SID)
 STANDARD DEPARTURE CHART
 INSTRUMENT (SID)

PORTO ALEGRE / Salgado Filho, INTL (SBPA)
 RWY 11/29
 FIG 3 - NINRU 1

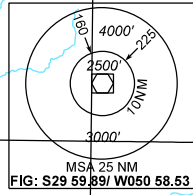


ACC CURITIBA
 135.85 128.45 121.50

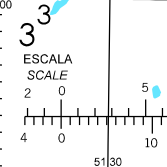
APP PALEGRE
 119.00 120.10 120.55 128.90 121.50

TWR PORTO ALEGRE
 118.10 121.50

TA 4000'



ALT. ELEV E HGT EM PÉS
 ALT. ELEV AND HGT IN FEET
 RUMOS SÃO MAGNÉTICOS
 BEARINGS ARE MAGNETIC
 VA/CHG:09°W



RMK

- 1- MNM IFR BLW MNM Regulares para DEP:
 1- IFR MNM BLW Regular Take-Off MNM DEP:
 -Teto: NO REQ / VIS 600m / RVR 500m.
 -Ceiling: NO REQ / VIS 600m/ RVR 500m.
- 2-RMK Adicional: Ver verso.
- 2-Additional RMK: See reverse side.
- 3-Descrição textual no verso.
- 3-See reverse side for textual description.

TAQUARA
 360 TQA

SBR546
 500
 GND

FIGUEIRAS
 114.70 FIG

SBCO

PORVU

AKPAR

NINRU

TRNS FB 097/32.7

TRNS TOR 088/64.1

TRNS BUTOK 083/16.4

TRNS GETVI 096/13.6

ELATE 32.3 DME FIG

GETVI

JUICE 38.0 DME FIG

TORRES
 230 TOR

SEM ESCALA
 NOT TO SCALE

TRAMANDAÍ
 300 FB

SANTA MARTA
 310 SW

BUTOK
 63.0 DME FIG

MODIFICAÇÕES / CHANGES: CARTA NOVA / NEW CHART

SUP/SUPP N029/A012 05 MAR 15 TIL 02 APR 15

DEPARTAMENTO DE CONTROLE DO ESPAÇO AÉREO - COMAER - BRASIL

PA00G-11

RMK

- 4 - Obstáculos Próximos Violando a OIS Desconsiderados Na Determinação do Gradiente de Subida :
4 - Close-in Obstacles Penetrating the OIS Surface and Not Considered in Calculation of Climb Gradient:
- a) DEP RWY 11:
- Terreno/Terrain: AZM MAG / MAG AZM FR THR 29 (DER):192 DEG
DIST FR THR 29 (DER): 88 m
ALT: 50 FT
- b) DEP RWY 29: - Construção/Building: AZM MAG / MAG AZM da/from THR 11: 250 DEG
DIST from THR 11: 700m
ALT: 57m
- 5-Observar compulsoriamente seção INS da AIP-MAP
5 - INS section of AIP-MAP shall be observed.

DESCRIÇÃO TEXTUAL
TEXTUAL DESCRIPTION

RWY 11

SAÍDA FIG 3:

Após decolagem, manter RDL 287 FIG até o VOR FIGUEIRAS. Após, curvar à esquerda, RDL 044 FIG até NDB TAQUARA. Então, ...

1-TRNS BUTOK: Curvar à direita, QDR 063 TQA até BUTOK.

2-TRNS GETVI: Curvar à direita, QDR 096 TQA até ELATE. Curvar à esquerda QDM 073 SW até GETVI.

RWY 29

SAÍDA NINRU 1:

Após decolagem, manter RDL 287 FIG até PORVU. Curvar à esquerda QDR 134 KRI até AKPAR. Curvar à esquerda QDM 097 FB até NINRU. Então, ...

1-TRNS BUTOK:

Curvar à esquerda QDM 014 TQA até o NDB TAQUARA. Curvar à direita QDR 064 TQA até JUICE. Curvar à esquerda QDR 063 TQA até BUTOK.

2-TRNS GETVI: Curvar à esquerda QDM 014 TQA até o NDB TAQUARA. Curvar à direita QDR 096 TQA até ELATE. Curvar à esquerda QDM 073 SW até GETVI.

3-TRNS FB: Manter QDM 097 FB até o NDB Tramandaí.

4-TRNS TOR: Curvar à esquerda QDM 068 TOR até NDB Torres.

RWY 11

FIG 3 DEPARTURE:

After take-off, maintain 287 FIG RDL until Figueiras VOR. Then, turn left, 044 FIG RDL until TAQUARA NDB. Then, ...

1-BUTOK TRNS: Turn right, 063 TQA QDR until BUTOK.

2-GETVI TRNS: Turn right, 096 TQA QDR up to ELATE, then 073 SW QDM until GETVI.

RWY 29

NINRU 1 DEPARTURE:

After take-off, maintain 287 FIG RDL until PORVU. Turn left 134 KRI QDR until AKPAR. Turn Left then 277 FB QDR until NINRU. Then, ...

1-BUTOK TRNS: Turn left 014 TQA QDM until TAQUARA NDB. Turn right 063 TQA QDR until BUTOK.

2-GETVI TRNS: Turn left 014 TQA QDM until TAQUARA NDB. Turn right 096 TQA QDR until ELATE. Turn left 073 SW QDM until GETVI.

3-FB TRNS: Maintain 097 FB QDM until Tramandaí NDB.

4-TOR TRNS: Turn left 068 TOR QDM until Torres NDB.



CODING TABLE

Identification	Aerodrome	Chart Code	AIRAC AMDT
SID FIG 1 – POSBI 1 RWY 11/29	PORTO ALEGRE / Salgado Filho (SBPA)	PA00E-22	SUP/SUPP N029/A012 05 MAR 15 TIL 02 APR 15

Seq	Transition	Path Terminator	Navaid / Fix / WPT	Type / Function	Flyover (Y/N)	REC Navaid	Course Mag (True)	Dist (NM)	Turn	IAS (KT)	Altitude (FT)	Vertical Angle	Perform.
010	RUNWAY	IF	RWY11	---	N	---	---	---	---	---	---	---	---
020	RUNWAY	CF	FIG	---	N	FIG	108 ()	9.6	---	---	---	---	---
030	ENROUTE	CF	ARPUM	---	N	CXS	003 ()	44.2	L	---	+20000	---	---
040	ENROUTE	CF	CXS	---	N	CXS	003 ()	5.0	---	---	---	---	---
010	RUNWAY	IF	RWY11	---	N	---	---	---	---	---	---	---	---
020	RUNWAY	CF	FIG	---	N	FIG	108 ()	9.6	---	---	---	---	---
030	ENROUTE	CF	TQA	---	N	FIG	044 ()	22.2	L	---	---	---	---
040	ENROUTE	CF	DAISE	---	N	TQA	017 ()	36.9	L	---	---	---	---
010	RUNWAY	IF	RWY29	---	N	---	---	---	---	---	---	---	---
020	RUNWAY	CF	POSBI	---	N	FIG	287 ()	7.4	---	---	---	---	---
030	ENROUTE	CF	KRI	---	N	KRI	310 ()	29.0	R	---	---	---	---
040	ENROUTE	CF	JAUNT	---	N	KRI	048 ()	24.3	R	---	---	---	---
010	RUNWAY	IF	RWY29	---	N	---	---	---	---	---	---	---	---
020	RUNWAY	CF	POSBI	---	N	FIG	287 ()	7.4	---	---	---	---	---
030	RUNWAY	CF	CXS	---	N	CXS	025 ()	48.1	R	---	---	---	---

COD	MEANING
+	AT OR ABOVE
-	AT OR BELOW
=	MANDATORY
	RECOMMENDED
SDF	STEPDOWN FIX

IDENT	Latitude / Longitude (WGS84) DD:MM:SS.SS
RWY 29 (DER)	S 29:59:39.77 W 051:10:58.84
RWY 11 (DER)	S 29:59:41.46 W 051:09:33.80
FIG	S 29:59:53.44 W 050:58:31.96
KRI	S 29:47:22.80 W 051:49:51.00
SARNO	S 29:48:04.17 W 051:01:41.01
CXS	S 29:11:53.01 W 051:11:19.07
TQA	S 29:40:06.60 W 050:46:54.60
DAISE	S 29:03:04.80 W 050:46:51.60
POSBI	S 29:59:29.40 W 051:19:29.40
KRI	S 29:47:22.80 W 051:49:51.00
JAUNT	S 29:26:45.60 W 051:35:00.60
ARPUM	S 29:15:13.36 W 051:10:26.12



CODING TABLE

Identification	Aerodrome	Chart Code	AIRAC AMDT
SID FIG 3 – NINRU 1 RWY 11/29	PORTO ALEGRE / Salgado Filho, INTL (SBPA)	PA00G-11	SUP/SUPP N029/A012 05 MAR 15 TIL 02 APR 15

Seq	Transition	Path Terminator	Navaid / Fix / WPT	Type / Function	Flyover (Y/N)	REC Navaid	Course Mag (True)	Dist (NM)	Turn	IAS (KT)	Altitude (FT)	Vertical Angle	Perform.
010	RUNWAY	IF	RWY11	---	N	---	---	---	---	---	---	---	---
020	RUNWAY	CF	FIG	---	N	FIG	107 ()	9.6	---	---	---	---	---
030	RUNWAY	CF	TQA	---	N	FIG	044 ()	22.2	L	---	---	---	---
010	ENROUTE	IF	TQA	---	N	---	---	---	---	---	---	---	---
020	ENROUTE	CF	JUICE	---	N	TQA	063 ()	16.4	R	---	---	---	---
030	ENROUTE	CF	BUTOK	---	N	TQA	063 ()	25.3	---	---	---	---	---
010	ENROUTE	IF	TQA	---	N	---	---	---	---	---	---	---	---
020	ENROUTE	CF	ELATE	---	N	TQA	096()	13.6	R	---	---	---	---
030	ENROUTE	CF	GETVI	---	N	SW	073 ()	27.4	L	---	---	---	---
010	RUNWAY	IF	RWY29	---	N	---	---	---	---	---	---	---	---
020	RUNWAY	CF	PORVU	---	N	FIG	287 ()	5.1	---	---	---	---	---
030	RUNWAY	CF	AKPAR	---	N	KRI	134 ()	13.0	L	---	---	---	---
040	RUNWAY	CF	NINRU	---	N	FB	097 ()	17.0	L	---	---	---	---
010	ENROUTE	IF	NINRU	---	N	---	---	---	---	---	---	---	---
020	ENROUTE	CF	TQA	---	N	FIG	014 ()	24.9	L	---	---	---	---
030	ENROUTE	CF	JUICE	---	N	TQA	063 ()	16.4	R	---	---	---	---
040	ENROUTE	CF	BUTOK	---	N	TQA	063 ()	25.3	---	---	---	---	---

010	ENROUTE	IF	NINRU	---	N	---	---	---	---	---	---	---	---
020	ENROUTE	CF	TQA	---	N	TQA	014 ()	24.9	L	---	---	---	---
030	ENROUTE	CF	ELATE	---	N	TQA	096 ()	13.6	R	---	---	---	---
040	ENROUTE	CF	GETVI	---	N	SW	073 ()	27.4	L	---	---	---	---
010	ENROUTE	IF	NINRU	---	N	---	---	---	---	---	---	---	---
020	ENROUTE	CF	TOR	---	N	TOR	068 ()	64.1	L	---	---	---	---
010	ENROUTE	IF	NINRU	---	N	---	---	---	---	---	---	---	---
020	ENROUTE	CF	FB	---	N	FB	097 ()	32.7	---	---	---	---	---

COD	MEANING
+	AT OR ABOVE
-	AT OR BELOW
=	MANDATORY
	RECOMMENDED
SDF	STEPDOWN FIX

IDENT	Latitude / Longitude (WGS84) DD:MM:SS.SS
RWY11 (DER)	S 29:59:41.46 W 051:09:33.80
RWY29 (DER)	S 29:59:39.77 W 051:10:58.84
FIG	S 29:59:53.44 W 050:58:31.96
CXS	S 29:11:53.01 W 051:11:19.07
PORVU	S 29:59:34.80 W 051:16:54.00
BUTOK	S 29:16:50.42 W 051:12:10.14
GETVI	S 29:16:46.00 W 051:10:01.60
TQA	S 29:40:06.60 W 050:46:54.60
TOR	S 29:24:51.59 W 049:48:24.18
FB	S 29:59:46.71 W 050:08:42.02
AKPAR	S 30:07:46.80 W 051:05:16.20
NINRU	S 30:05:04.80 W 050:45:51.60
JUICE	S 29:28:52.20 W 050:33:12.00
ELATE	S 29:37:33.60 W 050:31:37.20
SW	S 28:36:13.80 W 048:48:49.80