

CARTA DE APROXIMAÇÃO
POR INSTRUMENTOS (IAC)

SÃO JOSÉ DOS CAMPOS / Professor Urbano Ernesto Stumpf (SBSJ)

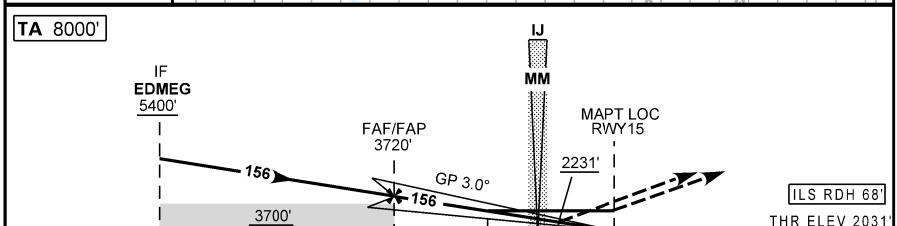
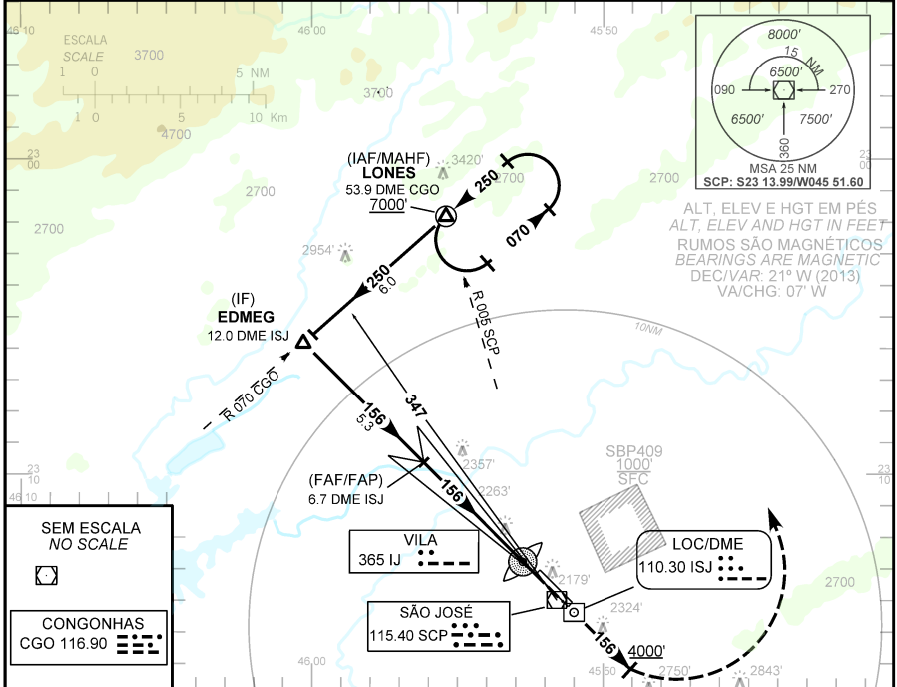
INSTRUMENT APPROACH CHART (IAC)

ILS V ou/ou LOC V RWY 15

| | | | | |
|----------------|-------------|--|-------------------------------|--------------------------|
| AD ELEV: 2120' | ATIS NIL | APP SÃO PAULO 124.15 134.15 134.90 129.00 120.45 129.05 123.90 125.60 135.25 124.70 121.50 | TWR SÃO JOSÉ 118.50 121.50 | GNDC SÃO JOSÉ 121.900 |
|----------------|-------------|--|-------------------------------|--------------------------|

RMK: 1) Pouso RWY 33: circular somente pelo setor SW do Aeródromo. 2) IAS MAX na espera 180 Kt. **Aproximação Perdida:** 1) Subir para 7000', gradiente MNM 4%. Manter rumo 156 até 4000'. Curvar à esquerda, RDL 005 SCP para espera em LONES, 2) IAS MAX 180kt na espera.

RMK: 1) **Arrival RWY 33:** circle SW sector only. 2) MAX IAS 180 Kt at holding. **Missed Approach:** 1) Climb to 7000', MNM gradient 4%. Maintain course 156 until 4000'. Turn left, 005 SCP RDL for holding at LONES, 2) MAX IAS 180kt at holding.



| | | | | | | | | | |
|----------------|------|-----|-----|-----|-----|-----|--|--|--|
| TO THR 15 (NM) | 10.3 | | | | | | | | |
| TO ISJ (DME) | 12.0 | 5.0 | 1.2 | 0.6 | 0.4 | 0.0 | | | |
| | | 6.7 | 2.9 | 2.3 | 2.1 | 1.7 | | | |

| FAF/FAP | 4.0 | 3.0 | 2.0 | 1.0 | 0.4 | RWY15 | KT | 090 | 110 | 130 | 150 | 170 | 190 |
|---------|------|------|------|------|------|-------|-------|--------------|------|------|------|------|------|
| | 3720 | 3390 | 3060 | 2740 | 2420 | 2231 | FPM | 500 | 600 | 700 | 800 | 900 | 1000 |
| | 1689 | 1359 | 1029 | 709 | 389 | 200 | (HGT) | FAF-MAPT 5NM | 3:20 | 2:43 | 2:18 | 2:00 | 1:45 |

| POUSO DIRETO STRAIGHT-IN | CAT | A | B | C | D | E |
|--------------------------|------------------------|------------------|-------------------|--------------------|--------------------|---|
| CAT I | DA / OCH / TETO | | | 2231 / 200 / 200 | | |
| | ALS/NO ALS/RVR ALS (m) | | | 1200 / 1200 / 1100 | | |
| LOC | MDA / OCH / TETO | | | 2510 / 480 / 500 | | |
| | ALS/NO ALS/RVR ALS (m) | | 1200 / 1600 / NIL | | 1800 / 2200 / NIL | |
| CIRCULAR TO CIRCLE | MDA / OCH / TETO | 2640 / 520 / 600 | | 2970 / 850 / 900 | 3310 / 1190 / 1200 | |
| | VIS (m) | 1600 | | 4000 | 4800 | |