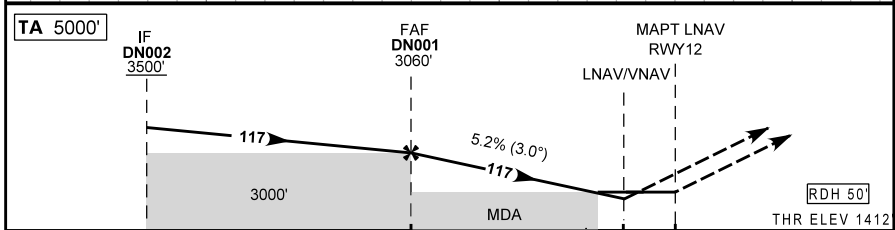
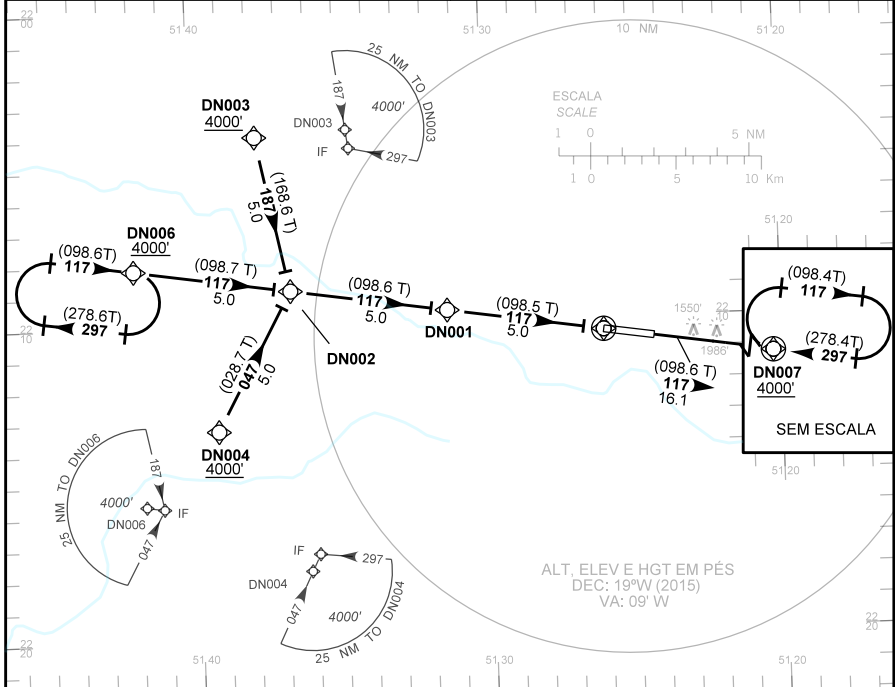


CARTA DE APROXIMAÇÃO
POR INSTRUMENTOS (IAC)
INSTRUMENT APPROACH CHART (IAC)

PRESIDENTE PRUDENTE / Presidente Prudente(SBDN)

RNAV (GNSS) RWY 12

AD ELEV: 1477'	ATIS NIL	APP PRUDENTE 125.45	TWR PRUDENTE 118.45	AFIS PRUDENTE 118.45
RMK: 1) Procedimento BARO-VNAV não autorizado abaixo de -10 °C ou acima de 50 °C para sistemas não compensados. 2) Observar antenas na aproximação perdida após a cabeceira oposta.				



DN001	4.0	3.0	2.0	1.0	0.9	RWY12	KT	090	110	130	150	170	190
	3060	2736	2418	2099	1781	1742	FPM	500	600	700	800	900	1000
	1648	1323	1005	687	369	330	FAF-MAPT 5NM	NIL					

POUSO DIRETO	CAT	A	B	C	D	E
	DA / OCH / TETO	1742 / 330 / 400				NA
LNAV/VNAV	ALS/NO ALS/ RVR ALS (m)	NIL / 1500 / NIL				
	MDA / OCH / TETO	1920 / 500 / 500				
LNAV	ALS/NO ALS/ RVR ALS (m)	NIL / 1600 / NIL		NIL / 2400 / NIL		
	MDA / OCH / TETO	NA				
CIRCULAR	MDA / OCH / TETO	NA				
	VIS (m)	NA				

MODIFICAÇÕES: CARTA NOVA.

020	Missed Ap.	TF	DN007	MAHF	Y	---	117 (098.6)	16.1	---	---	+4000	---	RNP APCH
030	Missed Ap.	HM	DN007	MAHF	Y	---	297 (278.4)	---	R	---	+4000	---	RNP APCH

IDENT	Latitude / Longitude (WGS84) DD:MM:SS.SS
DN001	S 22:09:40.73 W 51:31:21.77
DN002	S 22:08:55.83 W 51:36:41.33
DN003	S 22:04:00.68 W 51:37:45.01
DN004	S 22:13:20.05 W 51:39:16.25
DN006	S 22:08:10.75 W 51:42:00.84
DN007	S 22:12:48.19 W 51:08:53.47
RWY12	S 22:10:25.46 W 51:26:02.15

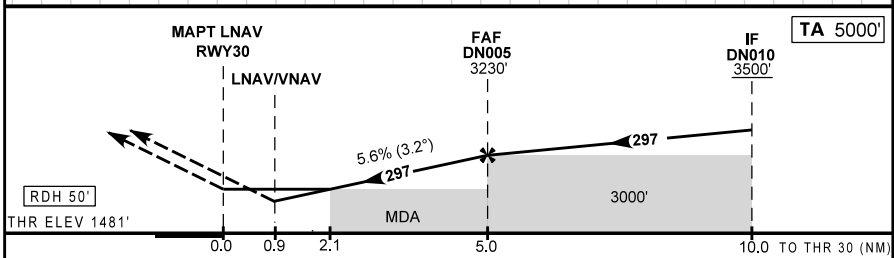
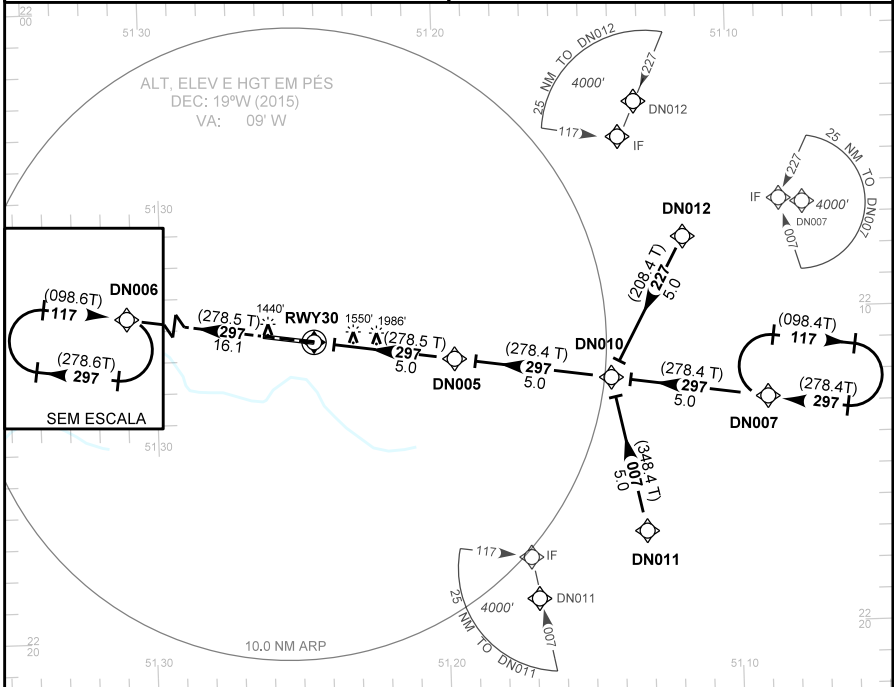
COD	Meaning
+	AT OR ABOVE
-	AT OR BELOW
=	MANDATORY
	RECOMMENDED
SDF	STEP DOWN FIX
Y	YES
N	NO
L	LEFT
R	RIGHT

CARTA DE APROXIMAÇÃO
POR INSTRUMENTOS (IAC)
INSTRUMENT APPROACH CHART (IAC)

PRESIDENTE PRUDENTE / Presidente Prudente(SBDN)

RNAV (GNSS) RWY 30

AD ELEV: 1477'	ATIS NIL	APP PRUDENTE 125.45	TWR PRUDENTE 118.45	AFIS PRUDENTE 118.45
RMIK: 1) Procedimento BARO-VNAV não autorizado abaixo de -10 °C ou acima de 50 °C para sistemas não compensados. 2) Observar antenas na aproximação final.		Aproximação Perdida: Subir para 4000' no rumo 297 para espera em DN006.		



RWY30	0.9	1.0	2.0	3.0	4.0	DN005	KT	090	110	130	150	170	190
ALT	1830	1870	2210	2550	2890	3230	FPM	500	600	700	800	900	1000
(HGT)	349	389	729	1069	1409	1749	FAF-MAPT 5NM	NIL.					

POUSO DIRETO STRAIGHT-IN	CAT	A	B	C	D	E
	DA / OCH / TETO	1830 / 349 / 400				
LNAV/VNAV	ALS/NO ALS/ RVR ALS (m)	NIL / 1600 / NIL				
	MDA / OCH / TETO	2240 / 759 / 800				
LNAV	ALS/NO ALS/ RVR ALS (m)	NIL / 1600 / NIL	NIL / 2000 / NIL	NIL / 3500 / NIL		
	MDA / OCH / TETO	NA				
CIRCULAR TO CIRCLE	MDA / OCH / TETO	NA				
	VIS (m)	NA				

MODIFICAÇÕES: CARTA NOVA.



CODING TABLE

This table supplements information contained in the chart to which it is associated. In spite of the fact the classification of waypoints (fly-by / flyover), courses, distances, altitudes, level and speed restrictions are mandatory, the providers may use the information as they find appropriate in order to code procedures. In other words, in case any particular coding is applied, it is mandatory for it to reflect the procedure published in the chart.

Identification		Aerodrome					Chart Code			AIRAC AMDT			
IAC RNAV (GNSS) RWY 30		PRESIDENTE PRUDENTE / Presidente Prudente, (SBDN)					DN00K-04			SUP AIP N128 15 OCT 15 TIL 12 NOV 15			
Seq	Transition	Path Terminator	Navaid / Fix / Waypoint	Function	Flyover (Y/N)	Navaid	Course Mag (True)	Dist (NM)	Turn (L/R)	IAS (KT)	Altitude (FT)	Gradient (%)	Perform.
010	Initial	IF	DN007	IAF	N	---	---	---	---	---	+4000	---	---
020	Initial	TF	DN010	IF	N	---	297 (278.4)	5.0	---	---	+3500	---	RNP APCH
010	Initial	IF	DN011	IAF	N	---	---	---	---	---	+4000	---	---
020	Initial	TF	DN010	IF	N	---	007 (348.4)	5.0	---	---	+3500	---	RNP APCH
010	Initial	IF	DN012	IAF	N	---	---	---	---	---	+4000	---	---
020	Initial	TF	DN010	IF	N	---	227 (208.4)	5.0	---	---	+3500	---	RNP APCH
010	Approach	IF	DN010	IF	N	---	---	---	---	---	+3500	---	---
020	Approach	TF	DN005	FAF	N	---	297 (278.4)	5.0	---	---	3230	---	RNP APCH
030	Approach	TF	RWY30	MAPT	Y	---	297 (278.5)	5.0	---	---	=1531	5.6	RNP APCH
010	Missed Ap.	IF	RWY30	MAPT	Y	---	---	---	---	---	---	---	RNP APCH
020	Missed Ap.	TF	DN006	MAHF	Y	---	297 (278.5)	16.1	---	---	+4000	---	RNP APCH
030	Missed Ap.	HM	DN006	MAHF	Y	---	117 (098.6)	---	R	---	+4000	---	RNP APCH

IDENT	Latitude / Longitude (WGS84) DD:MM:SS.SS
DN005	S 22:11:19.68W 51:19:33.02
DN006	S 22:08:10.75 W 51:42:00.84
DN007	S 22:12:48.19W 51:08:53.47
DN010	S 22:12:04.02W 51:14:13.27
DN011	S 22:16:58.94W 51:13:08.34
DN012	S 22:07:39.24W 51:11:39.49
RWY30	S 22:10:35.16 W 51:24:52.71

COD	Meaning
+	AT OR ABOVE
-	AT OR BELOW
=	MANDATORY
	RECOMENDED
SDF	STEP DOWN FIX
Y	YES
N	NO
L	LEFT
R	RIGHT