

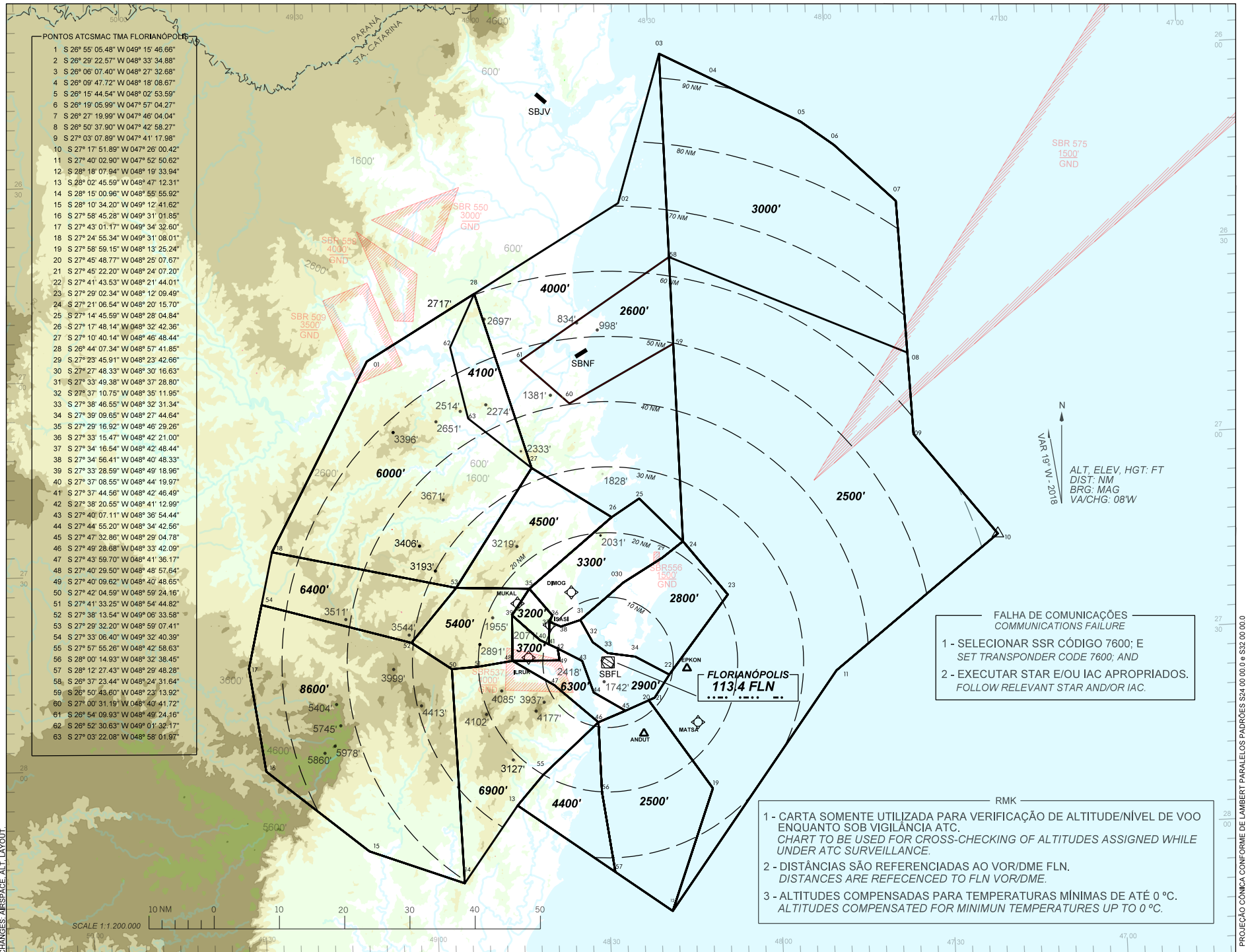
CARTA DE ALTITUDE MÍNIMA DE VIGILÂNCIA ATC - ATCSMAC

ATC SURVEILLANCE MINIMUM ALTITUDE ATC

SBFL ELEV 17' TA 7000'

APP FLORIANÓPOLIS 119.65 128.95 129.45 121.50

TMA FLORIANÓPOLIS (SBXF)



PONTOS ATCSMAC TMA FLORIANÓPOLIS

1	S 26° 55' 05.48"	W 049° 15' 46.66"
2	S 26° 29' 22.57"	W 048° 33' 34.88"
3	S 26° 06' 07.40"	W 048° 27' 32.68"
4	S 26° 09' 47.72"	W 048° 18' 08.67"
5	S 26° 15' 44.54"	W 048° 02' 53.59"
6	S 26° 19' 05.99"	W 047° 57' 04.27"
7	S 26° 27' 19.99"	W 047° 46' 04.04"
8	S 26° 50' 37.90"	W 047° 42' 58.27"
9	S 27° 03' 07.89"	W 047° 41' 17.98"
10	S 27° 17' 51.89"	W 047° 26' 00.42"
11	S 27° 40' 02.90"	W 047° 52' 50.62"
12	S 28° 18' 07.94"	W 048° 19' 33.94"
13	S 28° 02' 45.59"	W 048° 47' 12.31"
14	S 28° 15' 00.96"	W 048° 55' 55.92"
15	S 28° 10' 34.20"	W 049° 12' 41.62"
16	S 27° 58' 45.28"	W 049° 31' 01.85"
17	S 27° 43' 01.17"	W 049° 34' 32.60"
18	S 27° 24' 55.34"	W 049° 31' 08.01"
19	S 27° 58' 59.15"	W 048° 13' 25.24"
20	S 27° 45' 48.77"	W 048° 25' 07.67"
21	S 27° 45' 22.20"	W 048° 24' 07.20"
22	S 27° 41' 43.53"	W 048° 21' 44.01"
23	S 27° 29' 02.34"	W 048° 12' 09.49"
24	S 27° 21' 06.54"	W 048° 20' 15.70"
25	S 27° 14' 45.59"	W 048° 28' 04.84"
26	S 27° 17' 48.14"	W 048° 32' 42.36"
27	S 27° 10' 40.14"	W 048° 46' 48.44"
28	S 26° 44' 07.34"	W 048° 57' 41.85"
29	S 27° 23' 45.91"	W 048° 23' 42.66"
30	S 27° 27' 48.33"	W 048° 30' 16.63"
31	S 27° 33' 49.38"	W 048° 37' 28.80"
32	S 27° 37' 10.75"	W 048° 35' 11.95"
33	S 27° 38' 46.55"	W 048° 32' 31.34"
34	S 27° 39' 09.65"	W 048° 27' 44.64"
35	S 27° 29' 16.92"	W 048° 46' 29.26"
36	S 27° 33' 15.47"	W 048° 42' 21.00"
37	S 27° 34' 16.54"	W 048° 42' 48.44"
38	S 27° 34' 56.41"	W 048° 40' 48.33"
39	S 27° 33' 28.59"	W 048° 49' 18.96"
40	S 27° 37' 08.55"	W 048° 44' 19.97"
41	S 27° 37' 44.56"	W 048° 42' 46.49"
42	S 27° 38' 20.55"	W 048° 41' 12.99"
43	S 27° 40' 07.11"	W 048° 36' 54.44"
44	S 27° 44' 55.20"	W 048° 34' 42.56"
45	S 27° 47' 32.86"	W 048° 29' 04.78"
46	S 27° 49' 28.68"	W 048° 33' 42.09"
47	S 27° 43' 59.70"	W 048° 41' 36.17"
48	S 27° 40' 29.50"	W 048° 48' 57.64"
49	S 27° 40' 09.62"	W 048° 40' 48.65"
50	S 27° 42' 04.59"	W 048° 59' 24.16"
51	S 27° 41' 33.25"	W 048° 54' 44.82"
52	S 27° 38' 13.54"	W 049° 06' 33.58"
53	S 27° 29' 32.20"	W 048° 59' 07.41"
54	S 27° 33' 06.40"	W 049° 32' 40.39"
55	S 27° 57' 55.26"	W 048° 42' 58.63"
56	S 28° 00' 14.93"	W 048° 32' 38.45"
57	S 28° 12' 27.43"	W 048° 29' 48.28"
58	S 26° 37' 23.44"	W 048° 24' 31.64"
59	S 26° 50' 43.60"	W 048° 23' 13.92"
60	S 27° 00' 31.19"	W 048° 40' 41.72"
61	S 26° 54' 09.93"	W 048° 49' 24.16"
62	S 26° 52' 30.63"	W 049° 01' 32.17"
63	S 27° 03' 22.08"	W 048° 58' 01.97"

FALHA DE COMUNICAÇÕES
COMMUNICATIONS FAILURE

- 1 - SELECIONAR SSR CÓDIGO 7600; E SET TRANSPONDER CODE 7600; AND
- 2 - EXECUTAR STAR E/OU IAC APROPRIADOS. FOLLOW RELEVANT STAR AND/OR IAC.

RMK

- 1 - CARTA SOMENTE UTILIZADA PARA VERIFICAÇÃO DE ALTITUDE/NÍVEL DE VOO ENQUANTO SOB VIGILÂNCIA ATC. CHART TO BE USED FOR CROSS-CHECKING OF ALTITUDES ASSIGNED WHILE UNDER ATC SURVEILLANCE.
- 2 - DISTÂNCIAS SÃO REFERENCIADAS AO VOR/DME FLN. DISTANCES ARE REFERENCED TO FLN VOR/DME.
- 3 - ALTITUDES COMPENSADAS PARA TEMPERATURAS MÍNIMAS DE ATÉ 0°C. ALTITUDES COMPENSATED FOR MINIMUM TEMPERATURES UP TO 0°C.

CHANGES: AIRSPACE ALT. LAYOUT.

PROJEÇÃO CÔNICA CONFORME DE LAMBERT PARA EIXOS PADRÕES S24 00 00.0 e S32 00 00.0

INTENCIONALMENTE EM BRANCO
INTENTIONALLY LEFT BLANK