

**INSTRUMENT APPROACH  
CHART (IAC)**

**FLORIANÓPOLIS / Hercílio Luz, INTL (SBFL)**

**AD ELEV: 19'**

**RNAV(GNSS) W RWY 32**

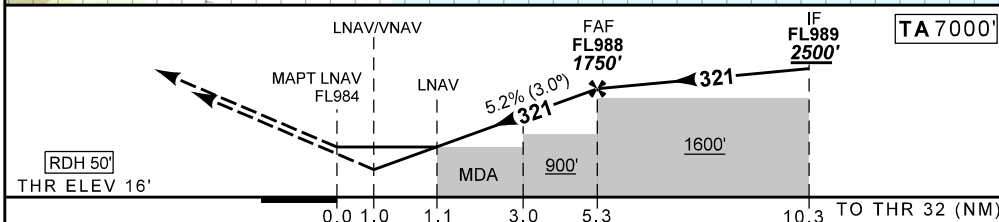
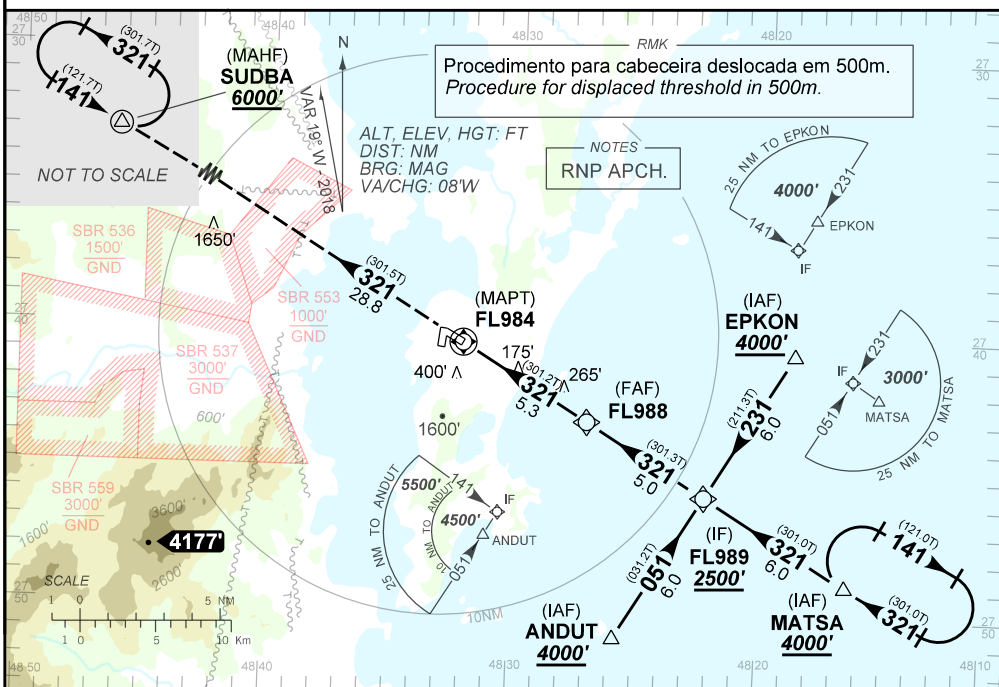
D-ATIS <b>127.45</b>	APP FLORIANÓPOLIS <b>119.50 119.65 128.95 129.45 121.50</b>	TWR FLORIANÓPOLIS - DCL <b>118.70 122.80 (MIL) 121.50</b>	GNDC FLORIANÓPOLIS <b>121.70</b>
<b>N/A</b>	FINAL CRS <b>321°</b>	FAF <b>1750'</b>	LNAV/VNAV DA / (OCH): <b>397' / (380')</b>
			LNAV MDA / (OCH): <b>430' / (420')</b>

APCH Perdida: 1) Subir para **6000'** com gradiente MNM de subida 4.4% até **2000'**, rumo **321** para espera em SUDBA.

Missed APCH: 1) Climb to **6000'** with MNM climb gradient 4.4% until passing **2000'**, on course **321** to SUDBA for holding.

RMK: 1) Para sistemas BARO-VNAV não compensados, procedimento LNAV/VNAV não autorizado abaixo de -10°C.

1) For uncompensated systems BARO-VNAV, LNAV/VNAV procedure not authorized below -10°C.



RWY32	1.1	2.0	3.0	4.0	5.0	FL988	KT	090	110	130	150	170	190
ALT	430	704	1022	1341	1659	1750	FPM	500	600	700	800	900	NA
(HGT)	420	687	1005	1324	1642	1733	FAF-MAPT	NA					

STRAIGHT-IN	CAT	A	B	C	D	E
	DA / (OCH)	397' / (380')				NA
LNAV/VNAV	ALS / NO ALS / RVR ALS (m)	NIL / 1600 / NIL		NIL / 1700 / NIL		
	MDA / (OCH)	430' / (420')				
LNAV	ALS / NO ALS / RVR ALS (m)	NIL / 1600 / NIL		NIL / 1900 / NIL		
	MDA / (OCH)	NA				
CIRCLING	MDA / (OCH)	NA				
	VIS (m)	NA				

CHANGES: NEW CHART.

**INTENCIONALMENTE EM BRANCO**  
INTENTIONALLY LEFT BLANK